



PRODUCT INDEX 2023 / 2024 – INDIA



## Polofil® NHT

### Light-curing nano-hybrid filling material

- High compressive strength > 440 MPa
- E-modulus > 17,000 MPa
- Non-sticky, smooth consistency
- High filler degree > 83 % w/w
- Low shrinkage
- Suitable for composite inlays

REF 2371

Set syringe 3 × 4 g, Bondfix bottle 2 ml

REF 2373 – 2377, 2379

Syringe 4 g (A1, A2, A3, A3.5, B2, OA2)



## Polofil® NHT Flow

### Flowable light-curing nano-hybrid filling material

- Filling minimally invasive cavities of all classes
- Filling small class I cavities, filling class II - V cavities including V-shaped defects and cervical caries
- High filler degree > 76 % w/w
- Surface hardness > 115 MHV
- Thixotropic („flow on demand“)

REF 1113–1115

Syringe 1.8 g (A1, A2, A3)



## Polofil® Supra

### Light-curing micro-hybrid restorative material

- Proven VOCO sintra glass multifiller system
- Fillings of class I to V cavities
- Low shrinkage
- Durable and resistant restorations
- Low water uptake, stable shades

REF 1361–1368 Syringe 4 g

(A1, A2, A3, A3.5, B2, B3, Incisal)

REF 1373 Set syringe 3 × 4 g (A2, A3, A3.5),

Vococid bottle 3 ml, Solobond M bottle 4 ml, accessories



## Solobond M

### Light-curing one-component dentine and enamel bond

- One component – one application
- “Stick-immediately-effect” for easy application of the restorative
- Universal for all light-curing restoratives
- Total-etch technique

REF 1227

Bottle 4 ml



## x-tra fil

### Light-curing posterior filling material

- Class I and II posterior fillings
- Core build-up
- Curing depth 4 mm
- Curing time only 10 s

REF 1740 Syringe 5 g

REF 1741 Caps 20 × 0.25 g



## Bondfix

### One-component light-curing nano-reinforced self-etch bond

- No postoperative sensitivities
- High bond strengths on enamel and dentine
- No shaking, no massaging
- Tolerates moisture
- Fast, easy – one step

REF 1095

Bottle 2 ml



## GrandioSO Heavy Flow

### Flowable universal nano-hybrid restorative material-highly viscous

- Universal application
- Physical properties superior to those of various other packable materials
- Very high filler content of 83 % w/w
- High in compressive and flexural strength

REF 1790 Syringe 2 × 2 g universal, accessories

REF 1791 Syringe 2 × 2 g A2, accessories

REF 1794 Caps 16 × 0.25 g universal



## Ionoseal

### Light-curing glass ionomer composite liner

- Lining under all types of filling material
- Ready-to-use one-component material
- Quick and hygienic application
- Fluoride release against secondary caries
- High compressive strength (226 MPa)
- High biocompatibility

REF 1326 Syringe 3 × 2.5 g, accessories

REF 1128 Syringe 1 × 2.5 g, accessories



## Ionolux

### Light-curing glass ionomer restorative material

- Class III and V restorations
- Small class I fillings
- Core build-up
- Excellent working time – setting time individually adjustable by light-curing
- Does not stick to the instrument, easy to model

REF 1991

Powder / liquid (12 g / 5 ml) A2, accessories

REF 2115 Set application capsule 50 pcs.

(10 × A1, 10 × A2, 30 × A3)



Source: Dr. Isma Goltz, Bremen / Germany



Source: Prof. Hervé Tassery, PU-PH, Faculty of Odontology, University of Marseille / France

## Calcimol

### Self-curing radiopaque calcium hydroxide paste

- Indirect pulp capping
- Lining under all filling materials
- Contains 26 % calcium hydroxide
- Suitable working time
- Supports the formation of tertiary dentine
- Radiopaque

REF 1097

Tube 2 pcs., base / catalyst



## VOCO Ionofil Molar

### Glass ionomer restorative material

- Restorations of class II cavities (not occlusion-bearing)
- Temporary long-term treatment of class I and II cavities
- Build-up fillings and linings
- Core build-up
- Very high abrasion resistance, compressive and transverse strength
- Continuous high fluoride release
- Tooth-like aesthetic translucency

REF 1443 Powder 15 g A3

REF 1448 Liquid 10 ml



## Calcimol LC

### Light-curing radiopaque calcium hydroxide paste

- Indirect pulp capping
- Lining under all filling materials
- High level of acid-resistance, protection when applying the total-etch technique
- Ready-to-use one-component material
- Supports the formation of tertiary dentine

REF 1307

Syringe 2 x 2.5 g, accessories



## Ionofil Plus

### Glass ionomer restorative material

- Fillings of class III and small fillings of class I
- Repair of V-shaped defects and enamel erosions as well as root erosions in the cervical area incl. class V fillings
- Build-up fillings for crowns
- Linings
- Good marginal adaptation
- Continuous fluoride release

REF 1525 Powder 15 g A2

REF 1524 Liquid 10 ml



## Calcicur

### Ready-to-use calcium hydroxide paste

- Direct capping
- For temporary filling of root canals
- Calcium hydroxide content of 45 %
- Promotes the formation of tertiary dentine
- Radiopacity

REF 1093

Syringe 2.5 g, accessories



## IonoStar Molar

### Glass ionomer restorative material

- Variable mixing time for adjustment of consistency
- Perfect marginal adaptation and easy application
- High compressive strength and abrasion resistance
- Non sticky consistency
- With proven VOCO glass technology

REF 2520

Set application capsule 50 pcs. (10 x A1, 10 x A2, 30 x A3)



## Meron Plus

### Resin reinforced glass ionomer luting cement

- Luting of porcelain-fused-to-metal crowns, bridges
- Luting of all-ceramic crowns manufactured from silicate ceramic, zirconium dioxide-only or alumina-only ceramic cores
- Self-adhesive: secure and quick bonding
- Also available in application capsule

REF 1731 Powder 15 g

REF 1732 Liquid 10 ml

REF 1736 Application capsule 50 pcs.



## IonoStar Plus

### Fast-setting glass ionomer restorative material

- Perfect marginal adaptation and packability
- Fast setting time of only 2 minutes from placement of the filling
- Excellent physical properties support long lasting restorations
- Tooth-like fluorescence for better esthetic results

REF 2540 Set application capsule 50 pcs. (10 x A2, 30 x A3, 10 x A3.5)

REF 2546, 2547 Application capsule 150 pcs. (A2, A3)



## Meron

### Glass ionomer luting cement

- Luting of crowns, bridges, inlays and orthodontic bands
- Low solubility in the mouth
- Low acidity
- Suitable for high strength all-ceramic crowns and bridges
- Also available in Application Capsule (AC Version)

REF 1086 Set powder / liquid (35 g / 15 ml)

REF 1242 Application capsule 50 pcs.



### Translucency



## Structur 2 SC

Self-curing composite material for the fabrication of provisional crowns and bridges



- Fabrication of aesthetic temporary crowns, bridges, inlays and onlays
- Simple and fast working steps
- Available in different shades for natural aesthetics
- High stability of shape and shade



REF 1479–1483, 1485, 1486, 1490

Cartridge 75 g

(A1, A2, A3, A3.5, B1, B3, C2, BL), mixing tips

## Provicol

Eugenol-free temporary luting cement with calcium hydroxide

- Semi-elastic properties for safe adhesion of the temporary
- Calcium hydroxide – supports the formation of tertiary dentine
- Ideal before adhesive luting with resin cements



REF 1075

Tube 2 × 25 g (base / catalyst)

## Bifix SE

Dual-curing self-adhesive composite-based luting system



- Definitive luting of metal, ceramic, zirconium dioxide and fibre-reinforced posts
- Definitive luting of inlays, onlays, crowns and bridges (not Maryland bridges) made from ceramic, zirconium dioxide, composites and metal
- Direct application from the syringe



REF 1785

QuickMix syringe 5 g universal, accessories

## Registrado X-tra

Addition-curing silicone for bite registration, extra hard, fast setting



- Occlusal bite registration
- Fixing of face bow registrations
- Optimised final hardness
- Short setting time of 40 seconds

REF 2035

Cartridge 2 × 50 ml, accessories



## Rebilda DC

Dual-curing flowable core build-up and post luting system



- Luting of fibre-reinforced resin posts
- Light-curing for time-saving application
- Additional chemical curing for reliable processing
- In three shades: blue for easy identification of preparation margins, dentine for aesthetic reasons, white as an aesthetic contrast to dentine



REF 1402

Set QuickMix syringe 10 g dentine, Futurabond DC bottle each of 4 ml liquid 1 and 2, accessories

## Ufi Gel hard

Hard direct denture relining



- Complete, hard relining chairside, in just one session
- Methyl methacrylate-free
- Neutral taste and odour
- No heat development in the mouth
- As easy as taking an impression
- Aesthetic, high patient acceptance and comfort



REF 2210

Set powder 60 g, liquid bottle 40 ml, conditioner bottle 20 ml, accessories

## Individuo Lux

Preformed individual impression trays, light-curing

- Fabrication of individual trays from contoured plates for maxillae and mandibles
- Allows precise and economic processing
- In blue transparent or blue opaque colour
- Light-cured with standard halogen light or UVA lights
- Pleasant mint flavour



REF 2408

Maxillae 50 pcs., blue transparent

## Ufi Gel P

Permanently soft, cold-curing relining material on silicone base



- Permanently soft relining for total and partial dentures – to eliminate pressure spots – to support the healing process in implantology
- Neutral odour and taste



REF 2070

Set tube base 50 ml, catalyst 50 ml, glazing base 10 ml, glazing catalyst 10 ml, adhesive bottle 10 ml, accessories

## Meron Plus QM

Resin reinforced glass ionomer luting cement

- Excellent adhesion to the dental structure
- Precise marginal fit
- Moisture and acid resistant
- Self-adhesive: secure and quick bonding without primer or conditioner
- Excess material can be removed without waiting thanks to optional short-time light polymerisation



Source: Prof. Dr. Jürgen Manhart, Munich / Germany

REF 1727 QuickMix syringe 8.5 g, accessories

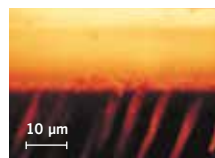
REF 1728 QuickMix syringe 3 × 8.5 g, accessories



# Admira Protect

Light-curing ORMOCER® based protective desensitizer

- Treatment of hypersensitive dentine
- Treatment of cervical areas and crown margins
- Special filler technology for high abrasion resistance
- Biocompatible ORMOCER® matrix – no glutaraldehyde
- Significant reduction of stimulus transfer through deep scaling of exposed root dentin
- High bond strength



Homogeneous covering of dentine with Admira Protect. The bright areas indicate infiltration into the tubules. Admira Protect CLSM study (Pióch), confocal laser scanning microphotography (CLSM) of Admira Protect on unetched dentine.

Source: Courtesy of PD Dr. T. Pióch, University Hospital, Heidelberg, 2001



REF 1650 Bottle 4.5 ml, accessories  
REF 1651 SingleDose 50 pcs., accessories

# Fissurit F

Light-curing fissure sealant with fluoride, white

- Sealing of pits, fissures and occlusal surfaces for caries prophylaxis
- Anchoring of orthodontic appliances
- Excellent flow properties and low viscosity
- Continuous fluoride release



REF 1292  
Syringe 2 x 2 g, accessories



# Bifluorid 10

Fluoride varnish for the treatment of dental hypersensitivity

- Treatment of sensitive teeth
- Transparent - no discolouration of teeth
- Special varnish base reinforces long-term effect and deep fluoridation

REF 1615  
Bottle 4 g, Solvent bottle 10 ml



# CleanJoy

Fluoride-containing tooth cleaning and polishing paste in three cleaning grades

- Removal of extrinsic discolouration
- Polishing of tooth surfaces as part of professional tooth cleaning, prior to whitening or following the removal of orthodontic devices
- Can be used with any conventional instrument (small brush, cup, etc)

REF 2090 Tube 100 g fine (mint)  
REF 2091 Tube 100 g medium (mint)  
REF 2092 Tube 100 g coarse (mint)



# Perfect Bleach

Whitening gel for discoloured teeth (10 % / 16 % carbamide peroxide)

- Gentle and permanent tooth whitening for vital and non-vital teeth, e.g. in cases of staining due to medication, fluorosis, food, trauma, ageing etc.
- Harms neither tooth substance nor restorations

REF 1665  
Syringe 3 x 2.4 ml  
16 % carbamide peroxide



# Traypurol tabs

Active-tabs for cleaning impression trays and instruments

- Removes alginates and cements within a short amount of time
- Bio-degradable and pH-neutral
- Gentle to material – suitable for all rustproof metals (including aluminium) and plastics
- Can be used in ultrasonic baths

REF 2355  
50 pcs.



# Die Silicone

Addition-curing silicone for extraoral fabrication of dental models

- Quick and simple models within minutes
- Can be cut with blade to finish proximal
- No lab involvement-time / money-saving
- Less expensive than CAD/CAM fabricated models

REF 1186  
Cartridge 2 x 50 ml



# Remin Pro

Protective dental care with fluoride and hydroxy apatite

- For the prevention and control of hypersensitivities
- Restore the mineral balance
- Regenerates the tooth after whitening, professional tooth cleaning



REF 2006  
Tube 12 x 40 g mixed  
(4 tubes each of: melon, mint, strawberry)

No milk protein allergies



# VOCO Profluorid Varnish

Fluoride-containing dental desensitising varnish (5 % NaF)



- Treatment of hypersensitive teeth
- Sealing the dentinal tubules, e.g. for cavity preparations or on sensitive root surfaces
- Easy non-messy *SingleDose* delivery system
- In seven pleasant flavours available: melon, mint, cherry, caramel, bubble gum, cola lime and pina colada
- Adheres well to moist surface and sets quickly in seconds after contact with saliva
- High immediate fluoride release to relieve hypersensitivity
- Enhanced flow characteristics with a thin spreadable consistency allow Profluorid Varnish to reach areas traditional varnishes may miss

Easy, non-messy  
*SingleDose*  
delivery system



REF 1269 *SingleDose* 50 pcs., melon

REF 2225 *SingleDose* 48 pcs., mixed

REF 2233 Tube 10 ml cherry



Training and Education Center in Cuxhaven, Germany



Manufacturing facility in Cuxhaven, Germany

VOCO GmbH  
Anton-Flettner-Straße 1-3  
27472 Cuxhaven  
Germany

Tel.: +49 (0)4721-719-0  
Fax: +49 (0)4721-719-140

info@voco.com  
www.voco.dental

**For enquiries**  
A. Sivaprakasam  
Mobil: 093425 30181  
a.siva@voco.com

**For technical information**  
Dr. Sorna Nagarajan  
Mobil: 98435 42888  
n.sorna@voco.com

**VOCO contacts**  
Delhi, North India  
Gujarat, MP, Chhattisgarh  
East India  
Rest of India

Harish Tiwari, mob.: 98687 66466  
Himanshu Bhavsar, mob.: 98988 68300  
Angshuman Gupta, mob.: 98306 76950  
Sivaprakasam, mob.: 93425 30181